

 **elevation**
every note matters

Software For Music Practice & Recording



USER MANUAL

SUPERSCOPE.

© Copyright 2008, Superscope Technologies

www.SuperscopeTechnologies.com

Welcome to Elevation	2
System Requirements.....	3
Installation and Authorization	4
Installation – Mac	4
Installation – Windows.....	4
Authorize License by Internet	4
Setting Up Audio Hardware	6
The Library	8
Main Screen.....	8
Building your Library	10
Locating Files.....	13
Deleting a File from the Library.....	13
Changing the Location of the Library	14
Working with Song Information.....	15
Lookup CD Track Information.....	15
Manually Edit Song Information (title, artist, etc.)	16
Linking Files.....	16
Listening to Elevation	18
Playing a Song.....	18
Adjusting the Playback Volume	18
Practicing with Elevation	19
Creating a Loop	19
Adjusting Loop Markers.....	19
Fine Adjusting a Loop.....	19
Looping by Ear.....	20
Modifying Tempo, Key and Fine Tune	20
Quickly Disable/Enable Time Stretching and Pitch Shifting	21
Setting Time Stretch Quality	21
Reduce or Remove a Lead Vocal	21
Isolating a Voice or Instrument	22
Practicing with the Metronome	23
Saving DSP (Digital Signal Processing) and Loop settings as a Snapshot.	24
Recording with Elevation.....	26
Recording with a Song or Snapshot as Accompaniment.....	26
Recording without Accompaniment	28
Playlists	30
Creating a Playlist	30
Adding Songs/ Snapshots to a Playlist	30
Setting the Number of Repetitions for Each Snapshot in a Playlist.....	31
Reorder Items in a Playlist.....	31
Burning a CD	32
Exporting a Snapshot as a New File (mp3, aiff, wav).....	33
Shortcut Keys and Mouse Support	34
Contact Information	35



Welcome to Elevation

Whether you're transcribing a great solo or learning a new tune, you'll soon find that a well-trained ear is essential for any successful musician. But who says you can't use a little help?

Superscope has packaged a set of tools to help you analyze all the great recordings in your collection, and even play or record along! Here are just a few of the music practice tools available in Elevation:

- **Import your CD collection or audio files** to the Elevation library and access your music with the click of a mouse. With the appropriate interface, Elevation can convert cassettes and LP's to WAV files or MP3's. Say goodbye to teaching or studying from a stack of cassettes and CDs!
- **Record vocals or instruments** using any file or snapshot in the library as accompaniment.¹ Elevation employs a simple and unique record interface that allows you to focus on teaching, studying, or performing music while still delivering the quality sound your performance deserves.
- **Play any file at a different key** while preserving the timing of the original recording, or **adjust a file's tempo** without affecting the pitch or tone of the performance. Superscope uses the highest quality tempo and key control provided by iZotope Inc., a recognized leader in the field of Digital Signal Processing (DSP).
- **Seamlessly loop any section of audio** in the library and even slow down or change the key of the loop.
- **Save loop, and DSP settings as a snapshot.** Export snapshots as new files or burn them to CD. DSP settings include all modifications to Key, Tempo, Fine Tune, Voice Reduction, EQ, and Balance.
- **Add performance notes or link files** to any audio file in your library.
- **Reduce the lead vocals of any CD audio track, WAV or AIFF file** and save the results as a new recording.

Unlike common digital media players, Elevation offers an interface designed explicitly for studying and practicing your favorite recordings. But don't think this software is just for practice. Elevation is a serious stereo recorder as well. Capture all your rehearsals or concerts with higher than CD quality resolution. Equipped with iZotope's Mbit+, psychoacoustic wordlength reduction, Elevation transfers high-res recordings to CD in the most musical and sonically pleasing manner possible. You don't need to be a professional recording engineer to get great results with Elevation. The unique record interface is simple to operate, allowing you to keep your attention focused on what's important: teaching, studying, and performing great music!

¹ When using Elevation with Windows, it is recommended that you record with an ASIO-compatible audio interface. If such an interface is not available, STI recommends using the ASIO4all drive www.asio4all.com with your WDM-compatible audio hardware.



System Requirements

For Elevation to run successfully, your computer system must have:

- Windows XP SP2 or higher/ Mac OS X 10.3.9 or higher (Intel Processor MAC only)
- Built-in sound²
- 20MB of available hard disc space.

² When using Elevation with Windows, it is recommended that you record with an ASIO-compatible audio interface. If such an interface is not available, STI recommends using the ASIO4all drive www.asio4all.com with your WDM-compatible audio hardware.

Installation and Authorization

Installation – Mac

- 1) Insert the Elevation disc into the CD-ROM drive of your computer (If you downloaded Elevation, proceed to step 5).
- 2) Locate the CD directory.
- 3) Open the **Elevation folder**
- 4) Double click **Elevation.1.0.dmg**.
- 5) Double click **Install Elevation**.
- 6) The Superscope End User License will launch. Read carefully and if you agree click **Install**.
- 7) Click **Agree**.
- 8) Once Elevation has successfully installed, click **Quit**.

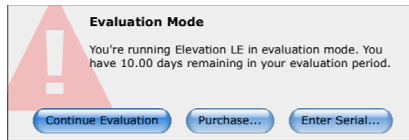
Installation – Windows

- 1) Insert the Elevation disc into the CD-ROM drive of your computer (If you downloaded Elevation, proceed to step 5).
- 2) Locate the CD directory.
- 3) Open the **Elevation folder**.
- 4) Double click **Elevation_Installer.1.0.msi**.
- 5) If the Windows Security Warning appears, click **Run**.
- 6) The Windows Setup Wizard will open. Click **Next**.
- 7) The Superscope End User License will launch. Read carefully and if you agree select **“I accept the terms in the License Agreement.”** Click **Next**.
- 8) Choose where Elevation should be installed. It is recommended you accept the default location, by clicking **Next**. Click **Browse** to select a different location.
- 9) Elevation is now ready to install. Click **Install**.
- 10) A progress bar appears as the Elevation files are copied to your computer. This may take a few moments.
- 11) On computers running Windows XP, Windows Media Format 11 Runtime Setup will begin (If you are running Windows Vista, proceed to step 14). These files are required for playback of WMA (Windows Media Audio) files. Click **Yes** to install. Click **No** to cancel installation.
- 12) View the Windows Media Format 11 Runtime License Agreement. Click **Yes** to accept. Click **No** to cancel installation.
- 13) After Windows Media Format 11 Runtime Setup has completed, click **OK**.
- 14) The Elevation Setup Wizard is complete. Click **Finish**.

Authorize License by Internet

All purchased copies of Elevation are required to be authorized in order to operate beyond the 10-day evaluation period. Follow these steps to authorize Elevation over the Internet:

- 1) Confirm that the computer Elevation is installed on is connected to the Internet.
- 2) Click **Start\Programs\Elevation** (Windows) or **Finder\Applications\Elevation** (Mac) to launch Elevation. The following screen will appear:



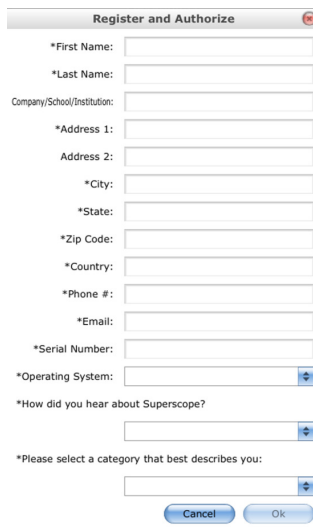
- 3) If you have already purchased Elevation, click **Enter Serial...** to authorize.

Users are welcome to evaluate Elevation for 10 days by selecting **Continue Evaluation**. In addition to the 10-day time limit, the following features are disabled in evaluation mode:

- File export
- CD Burning

If you would like to purchase Elevation, click **Purchase** to be connected to Superscope's web store.

- 4) With your purchase of Elevation, you should have received a 16-digit serial number either by email or as part of the Elevation packaging. Serial numbers are case-sensitive. Include all dashes when typing. Complete all required fields (marked with *) and type the serial number into the following screen and click **OK**.



Register and Authorize

*First Name:

*Last Name:

Company/School/Institution:

*Address 1:

Address 2:

*City:

*State:

*Zip Code:

*Country:

*Phone #:

*Email:

*Serial Number:

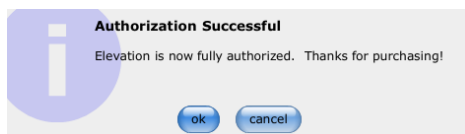
*Operating System:

*How did you hear about Superscope?

*Please select a category that best describes you:

Cancel OK

- 5) Congratulations! Your copy of Elevation is authorized and ready to use. Click **OK** to continue.

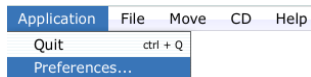


Setting Up Audio Hardware

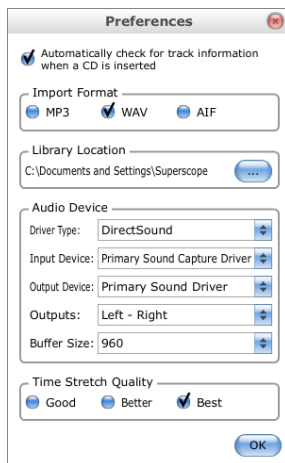
Elevation plays and records digital audio. In order to hear this audio, your computer's audio card must convert the digital information generated by Elevation into analog audio, which can then be amplified by headphones, powered speakers, etc. In order to record along with Elevation in real time, the time delay incurred during this conversion must be low. This time delay is known as *Latency*. If latency is too high, the accompaniment file and recorded audio will be noticeably out of sync. On Macintosh, the built-in audio hardware can be used for recording with Elevation files. On Windows, it is recommended that you record with an ASIO-compatible audio interface. If such an interface is not available, STI recommends using the ASIO4all driver with your WDM-compatible audio hardware for low-latency recording (www.asio4all.com).

To deliver digital audio to the audio hardware, Elevation uses the driver you have selected in the Preferences dialog.

To setup hardware for playback and recording, select **Application > Preferences**.



The following Preferences menu will appear:



Select Driver Type: On Windows, you can select from DirectSound or ASIO-compliant devices. Select ASIO-compliant devices when recording with Elevation. On Mac OS X, you can select from CoreAudio-compliant devices.

Select Input Device: The devices for your selected driver type will be listed here. Select the input device you wish to use when recording with Elevation.

Select Output Device: The devices for your selected driver type will be listed here. Select the output device you wish to use when listening to Elevation.

Select Outputs: The available outputs for your selected output device will be listed here. Select the outputs you wish to use when listening to Elevation.

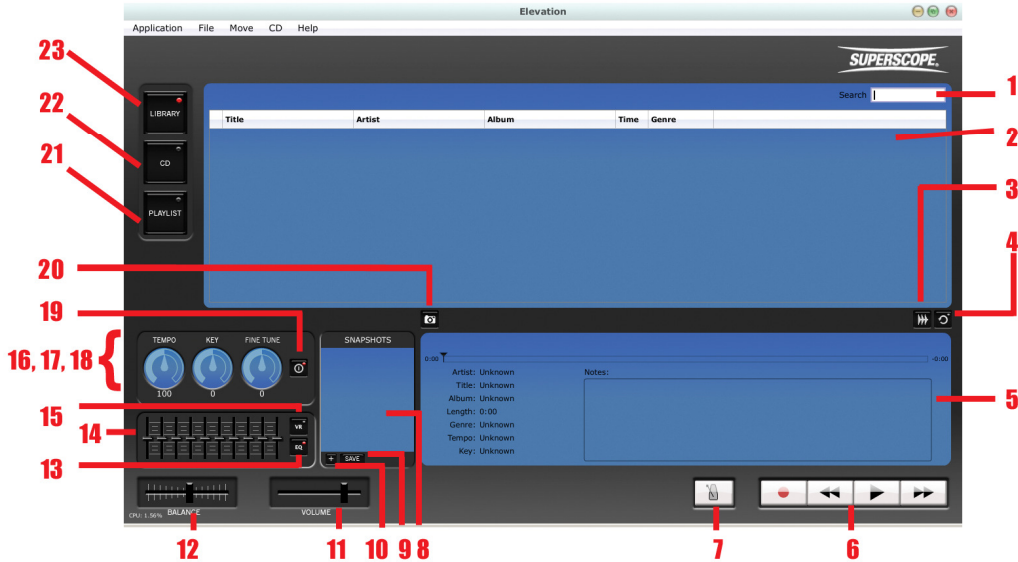


Select an audio buffer size: If audio distorts or ‘breaks up’ during playback, try increasing this setting. Increasing audio buffer size will also increase latency. If latency is too high, try decreasing this setting.

Control Panel... : If an ASIO-compliant device is selected, you will be given an option to launch the device’s control panel. ASIO control panels differ by manufacturer. Please consult the documentation for your audio device to determine if you need to modify control panel settings.

The Library

Main Screen




(1) Search Window

Enter Titles, Artists, and Albums into the Search window and Elevation will filter the library according to your search criteria.

(2) Library Window

Displays the audio files in the Elevation library. Files can be resorted by clicking one of the headings in the Library window (Title, Artist, Album, Time, Genre).

(3) Waveform View Button

Click to open waveform view to fine adjust a loop. In Waveform View, the visual representation of this button changes. Clicking the **Timeline view button**  in Waveform view returns to Timeline view.

(4) Loop Enable Button

Click to activate/deactivate looping.

(5) File Info Window

Displays the playback location, loop points, remaining and elapsed time, and file information for the selected file.

(6) Transport

Record Button 


Click to enter Record mode.

BWD Button 

Click to return to the beginning of a track or loop. From the beginning of a track or loop, click to return to the previous track in the library.

Play/ Stop Button 

Click to start or stop playback.

FWD Button 	Click to advance to the next file in the library.
(7) Metronome Button	Click to start or stop the metronome. Right click the metronome button (on Mac, use [Control] + click) and select Settings... to adjust metronome settings.
(8) Snapshot Window	Lists all snapshots for the selected file.
(9) Snapshot 'Save' Button	Click to save changes for the currently selected snapshot.
(10) Snapshot '+' Button	Click to add a snapshot.
(11) Volume Slider	Click and slide to adjust the output level of the Elevation media player.
(12) Balance Slider	Click and slide to adjust the stereo balance of the Elevation media player. Right click to select Balance type (on Mac, use [Control] + click).
(13) EQ In/Out button	Select to activate/deactivate the Equalizer.
(14) EQ Sliders	Click and slide to adjust the gain for the selected EQ band.
(15) Voice Reduction (VR) button	Select to activate/deactivate Voice Reduction. Right click the VR (Voice Reduction) button (on Mac, use [Control] + click) and select Advanced... to adjust VR settings.
(16) Tempo Rotary Control	Alters playback speed -75%/+100% without affecting pitch.
(17) Key Rotary Control	Alters Key +/- 12 semitones without affecting playback speed.
(18) Fine Tune Rotary Control	Alters playback tuning +/- 50 cents without affecting playback speed. 100 cents equals one semitone.
(19) Key/Tempo/FT In/Out	Select to activate/deactivate the Key, Tempo, and Fine Tune Control.
(20) Snapshot Button	Click to open the snapshot window.
(21) Playlist Button	Select to enter Playlist mode.
(22) CD Button	Select to enter CD mode.
(23) Library Button	Select to enter Library mode.

Building your Library

Elevation supports the following audio file formats:

<u>Format</u>	<u>Extension</u>
Windows Media Audio	.wma
Waveform Audio Format "WAVE"	.wav
Audio Interchange File Format	.aif or .aiff
MPEG-1 Audio Layer 3	.mp3

There are several ways to import supported audio files to your Elevation library. If a file is located on an attached computer drive, you can drag and drop this file directly into the Library window or use the Import dialog to add the file to your library. Entire audio CDs or individual CD audio tracks can also be ripped to the Elevation library.

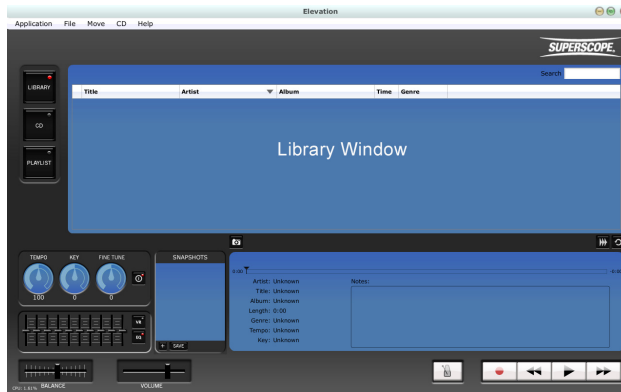
Note: Elevation plays audio at a sample rate of 44.1kHz (CD quality). If a file in your library is of a different sample rate, audio will be converted to 44.1kHz during playback.

Drag and Drop

- 1) Click the **Library** button to enter Library mode.

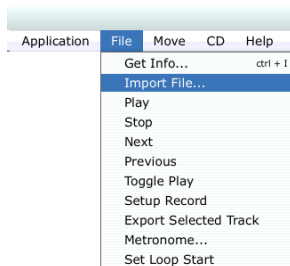


- 2) Use Windows Explorer/Finder to locate a supported audio file.
- 3) Drag and drop the file into Elevation's Library window. If a file that is not supported is dropped into the Library window, it is ignored. The song information (title, artist, album, etc.) for the imported file will appear in the Library window.

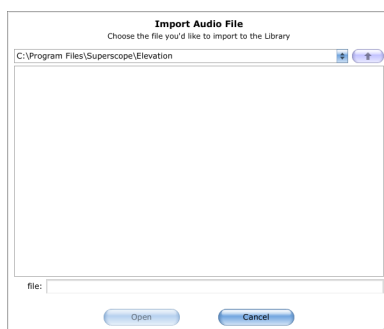


Import Dialog

- 1) Select **File > Import File**.



- 2) From the Import Audio File screen, search your computer's file system and select a supported audio file. Note: Files that are not supported by Elevation will not be shown in this screen.



- 3) Click **Open** to add the file to the Elevation library. The song information (title, artist, album, etc.) for the imported file will appear in the Library window.

Import an Entire Audio CD to the Library

If an audio CD is found in your computer's CD drive while Elevation is open, the following dialog will appear, “**Would you like to import the CD <CD Name> into your Elevation library?**”

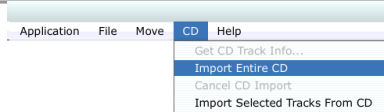
Click **Yes** to import the CD, or click **No** to exit.

To manually import a CD:

- 1) Click the **CD button** to enter CD mode.



- 2) Select **CD > Import Entire CD**.



- 3) Elevation will begin importing the CD. The track that is currently importing will be shaded to indicate import progress.

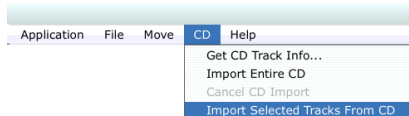
To cancel importing, choose **CD > Cancel CD Import**.

Import Selected Tracks from an Audio CD to the Library

- 1) Click the **CD button** to enter CD mode.



- 2) Select tracks for importing by clicking on track titles in the Library window.
 - To select contiguous tracks, hold **[Shift]** during selection.
 - To select non-contiguous tracks, hold **[Command]** (Mac) or **[Ctrl]** (Win) during selection.
- 3) Choose **CD > Import Selected Tracks From CD**.

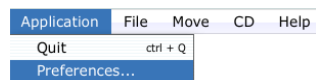


Elevation will begin importing select tracks from the CD.

Change Import File Format

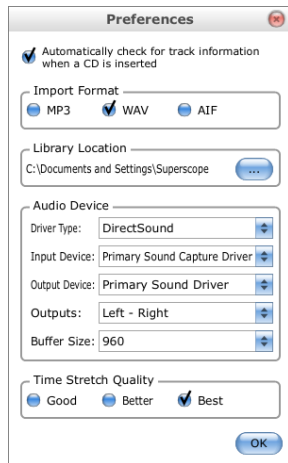
CD audio can be imported to the Elevation library as MP3, WAV, or AIF files. To change the Import File Format:

- 1) Choose **Application > Preferences**.



- 2) Choose a format under **Import Format**. Selecting **MP3** will create smaller files thus saving hard drive space. Elevation imports MP3 files at 128kbps.

Note: If you intend to modify playback with Key, Tempo, Fine Tune, or VR, import audio in WAV or AIF format for maximum quality.



Click **OK** to save changes and exit.

Locating Files

Sorting the Library

As the size of your Elevation library increases, you'll need simple ways to locate files quickly. Clicking on any heading in Elevation's Library window will sort files by alphanumeric order according to the chosen heading (**Title, Artist, Album, Time, or Genre**).

Title	Artist	Album	Time	Genre
-------	--------	-------	------	-------

Clicking a heading a second time will reverse the alphanumeric order of the files.

Searching the Library

Enter Titles, Artists, and Albums into the **Search window** and Elevation will filter the library according to your search criteria. The Search filter updates after each character is entered. To view the full library again, delete all characters from the **Search window**.



Note: Searching is disabled in Play mode.

Deleting a File from the Library

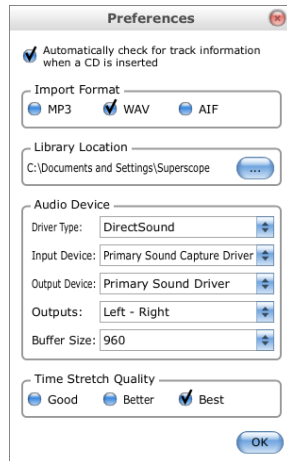
To delete a file from the Elevation library, click to select the file and press **[delete]** on your computer's keyboard. A dialog will ask you to confirm that you want to delete this selection from the Elevation library.

Note: Even though a file may be highlighted, you still need to click to select the file before deleting.

Changing the Location of the Library

During installation, Elevation creates a folder for all the audio files in the Elevation library. To change the location of this folder:

- 1) Choose **Application > Preferences**.
- 2) Click the **Library Location** button  to view the current library location.



- 3) Select or create a folder and click **OK**.

Note: To back up or transfer your library to a new computer, simply connect a removable storage device to your pc and copy the Library folder from the location selected above.

Working with Song Information

Lookup CD Track Information

When a CD is found in your computer's CD drive, Elevation will automatically try to retrieve CD track information (Title, Artist, etc.) from the Internet. To disable this feature:

- 1) Choose **Application > Preferences**.
- 2) Deselect the field marked, "**Automatically check for track information when a CD is inserted.**"

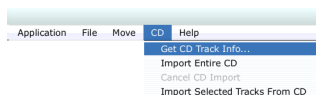


To manually initiate downloading of track information:

- 1) Confirm that your computer is connected to the Internet.
- 2) Click the **CD button** if Elevation is not already in CD mode.



- 3) Select a CD track in the main window.
- 4) Choose **CD > Get CD Track Info...**



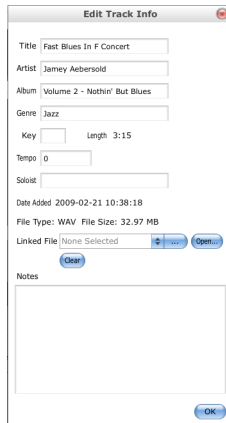
Track Information will appear in the CD window. If Elevation finds more than one possible match for your CD, you will be asked to select the correct CD title and artist from a list.

Manually Edit Song Information (title, artist, etc.)

Elevation allows you to edit the song information stored with files in the library. To view or modify song information, do one of the following:

- 1) Right click the file (on Mac, use **[Control]** + click) and select **Get Info**.
- 2) Use the keyboard shortcut **[Command]-[I]** (Mac) or **[Ctrl]-[I]** (Win) while the file is selected.
- 3) Choose **File > Get Info** while the file is selected.

The Edit Track Info screen will appear...

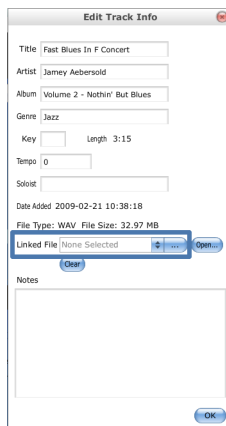


After you have edited a file's song information, click **OK** to save changes and exit.


Linking Files

While analyzing a recording in Elevation, you may chose to transcribe with a notation program or follow along with digital sheet music. Elevation allows you to attach any file, (e.g. pdf, jpg, mus, sib, ntn, etc.) to an audio file in your Elevation library for easy access. This helps to organize your practice or transcription projects by linking sheet music with audio files.

- 1) From the Edit Track Info screen, simply drag and drop a file into the **Linked File** field,



or...

- 2) Click the **Linked File button** .
- 3) Browse the attached drives, select a file and click the **Open**. The selected file is now linked with an audio file in your Elevation library.

From the Edit Track Info screen, click the **Open button**  to open the linked file or the **Clear button**  to clear the linked file.

Listening to Elevation

Playing a Song

You can start and stop playback in several different ways. The following methods apply to Library, CD, and Playlist mode:

- 1) Click on the **Play/Pause button** to toggle playback ON and OFF. The visual representation of this button changes from a Play icon to a Stop icon and back depending upon the current state of the transport.





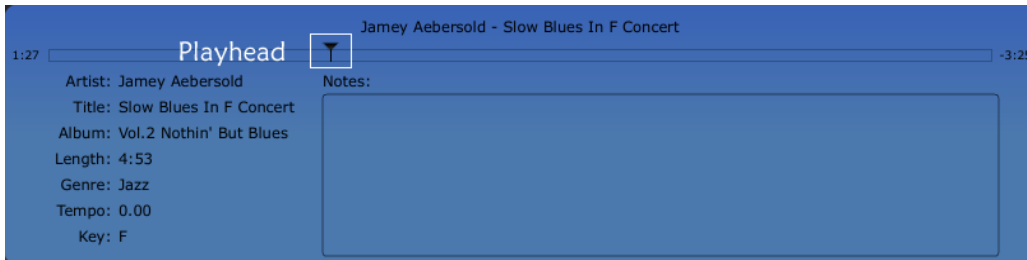
- 2) Press the space bar on the computer keyboard to toggle playback ON and OFF.
- 3) From Stop mode, double click on a song's entry in the library to initiate playback.

Note: Once Elevation is in Play mode, you do not need to double click a song's entry to select a new track. Simply click once and playback will follow selection.



The Speaker icon will appear next to the file that is currently playing.

To jump to a particular section of a song, click and drag the Playhead  along the timeline. Playback will resume from the Playhead's new position. In CD mode, playback must be initialized before the Playhead  can be repositioned.



Adjusting the Playback Volume

Adjust the playback volume by clicking and dragging the **Volume slider** between full volume (far right) and mute (far left). The **Volume slider** affects the level of Library, Playlist, and CD playback. The position of this slider will have no effect on input or record levels.




Practicing with Elevation

Creating a Loop

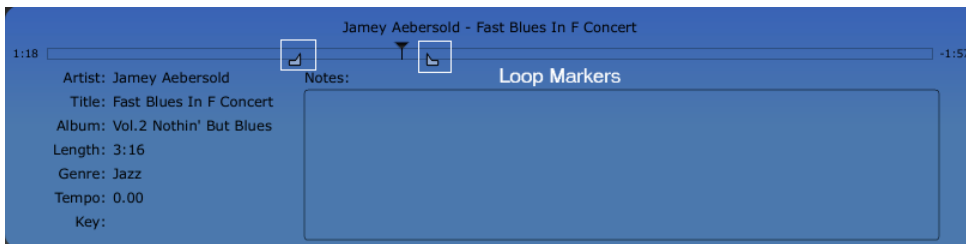
There are two methods for looping sections of audio in Library mode:

- 1) Positioning the loop markers in Timeline view or Waveform view
- 2) Looping 'by ear', i.e. pressing [L] on the computer keyboard during playback to set the Start and End points of a loop

Adjusting Loop Markers

To create a loop in timeline view, begin by clicking the **Loop Enable/Disable button** . If this is the first time a loop was created for this file, loop markers will appear at the furthest points on the timeline.


Click and drag the loop markers to outline a section of audio for looped playback.





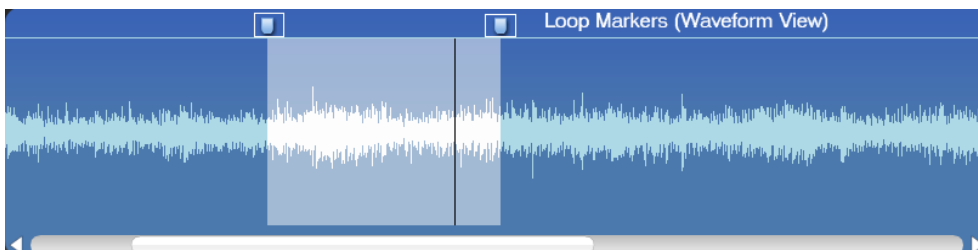
To return to normal playback, click the **Loop Enable/Disable button** . Clicking this button again will resume looping within the region designated by the loop markers.

Note: When a file is exited, Elevation saves the loop position for that file automatically.

Fine Adjusting a Loop

To fine adjust a loop, click the **Waveform button**  to view the file's waveform. Click and drag loop markers with the mouse to fine adjust loop points.

Use the **Zoom buttons**   or the scroll wheel on the mouse to obtain a closer view of the loop points. When using the scroll wheel to zoom, position the mouse pointer on the region of the waveform you wish to focus on. Rotating the scroll wheel will zoom around the position of the mouse pointer.



To jump to a particular section within the loop, click within the shaded area. Playback will resume from the playback wiper's new position.

Note: When a loop is set, you will not be able to move playback outside of the looped region. When looping is disabled, you can click anywhere in the waveform to move playback position.

Looping by Ear

During playback, press [L] on your computer's keyboard when you hear the point where looping should begin. Press [R] again when you hear the end point of the loop. Looping will begin when the end point is set. To clear the loop, press [L] a third time.

Modifying Tempo, Key and Fine Tune

Slowing down audio is perhaps the most popular feature in Elevation. Whether a file is playing or stopped, simply click the **Tempo control** and maneuver the mouse up to increase and down to decrease the playback speed without affecting pitch. **Tempo control** is adjustable -75%/+100% (25/200).



Is the accompaniment out of your vocal range? Looking for an easy way to practice an exercise in all 12 keys? Whether a file is playing or stopped, simply click the **Key control** and maneuver the mouse up to increase and down to decrease the Key without affecting the playback speed. **Key control** is adjustable +/- 12 semitones.



Have you ever converted audio from records or tapes to WAV or MP3 files? Was the speed of the cassette player or turntable calibrated properly? Are you playing along with a track in your library using your school's not-quite-in-tune piano?




There is any number of reasons to use Elevation's **Fine Tune control**. Whether a file is playing or stopped, simply click the **Fine Tune control** and maneuver the mouse up to increase and down to decrease pitch without affecting the playback speed. **Fine Tune control** is adjustable +/-50 cents (100 cents = 1 semitone).



Note: You may also adjust Tempo, Key, or Fine Tune settings by positioning the mouse pointer over the **Tempo, Key, or Fine Tune control** and rotating the scroll wheel on your mouse.

Note: Clicking the **Tempo**, **Key** or **Fine Tune control** while holding [**Command**] (Mac) or [**Ctrl**] (Win) will reset the value to the default setting.

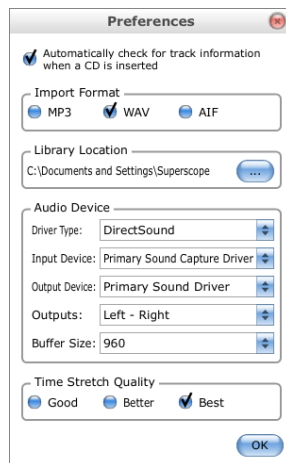
Quickly Disable/Enable Time Stretching and Pitch Shifting

When modifying a file with **Tempo**, **Key**, or **Fine Tune control**, you may want to create an A/B comparison with the original file. Clicking the **In/Out button**  will allow you to toggle between processed and unprocessed playback. **Tempo**, **Key**, and **Fine Tune control** is active when Elevation is first launched. If adjusting controls does not produce a change in audio, make sure the **In/Out button**  is lit. If the **In/Out button**  is not lit, click the button to activate.

Setting Time Stretch Quality


On older computers, using the **Key**, **Tempo**, or **Fine Tune control** may require an excessive amount of CPU power resulting in audio dropouts during playback.

- 1) To change Time Stretch Quality, choose **Application > Preferences**. The following Preferences Menu will appear:

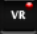


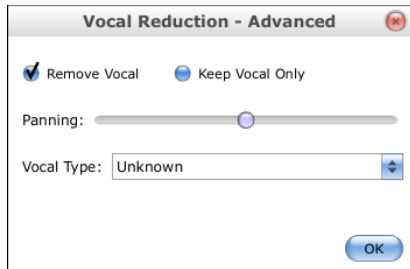
- 2) Select **Good**, **Better**, or **Best** (Good = least CPU, Best = most CPU), and then click OK.

Reduce or Remove a Lead Vocal

When recording a vocal performance while using a commercial recording as accompaniment, it is often necessary to reduce or remove the recorded vocals in order to add your own. Click the **VR (Voice Reduction) button**  to reduce or remove the lead vocal performance in a conventional stereo recording.

To modify Voice Reduction settings:

- 1) Right click the **VR (Voice Reduction) button**  (on Mac, use [**Control**] + click).
- 2) Click '**Advanced...**' The VR control panel will appear:



Remove Vocal/ Keep Vocal Only: When making standard karaoke-style recordings, select the default option, **Remove Vocal**. To isolate the vocal performance by reducing the accompaniment instrumentation, select **Keep Vocal Only**.

Panning: Most lead vocal performances will reside in the center of the stereo field, meaning there will be equal amounts of vocal signal placed in the left and right channels. To isolate a vocal that is off-center, click and drag this slider until the precise vocal position is located. If **Remove Vocal** is selected, this is where maximum vocal reduction occurs. If **Keep Vocal Only** is selected, this is where the vocal will be at its loudest.

Note: Hold **[Command]** (Mac) or **[Ctrl]** (Win) and click the **Panning Slider** to return Balance to the center position.

Vocal Type: This controls an internal frequency, which the vocal remover considers the lowest frequency in the human voice. Below this frequency no vocal suppression will occur.

Note: All modifications made to the VR control panel can be saved as part of a snapshot. See [“Save DSP \(Digital Signal Processing\) and Loop settings as a Snapshot.”](#)

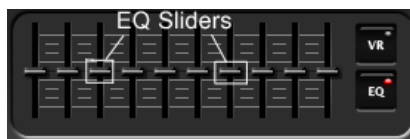
Note: For maximum performance, it is strongly recommended that you use voice reduction with CD Audio, WAV, or AIF files. Using voice reduction with MP3 files will have a negative effect on audio quality.

Isolating a Voice or Instrument



When analyzing one particular instrument in a stereo mix, it can be useful to hone in on the instrument's frequency band (EQ) and stereo location (Balance).

Equalization

To adjust the gain for a particular frequency range, simply click an **EQ slider** and maneuver the mouse up or down.



Positioning the mouse pointer over an **EQ slider** and using the mouse scroll wheel will also adjust the gain for the selected frequency band.

Note: EQ is active when Elevation is first launched. If adjusting the sliders does not produce a change in audio, make sure the **EQ In/Out button**  is lit. If the **EQ In/Out button**  is not lit, click the button to activate.

Adjusting the Playback Balance



When playing a stereo file, the **Balance slider** alters the amount of signal reproduced from each channel. Elevation offers two different modes for adjusting Balance: Normal and Channel. To switch Balance modes, right click the **Balance slider** (on Mac, use **[Control]** + click) and select Normal or Channel.

Normal Mode: Move the **Balance slider** toward the channel you wish to hear (left or right). As you move the **Balance slider** towards one channel, the amount of signal that you hear from the opposite channel will decrease.

Channel Mode: Move the **Balance slider** toward the channel you wish to hear (left or right). As you move the **Balance slider** towards one channel, the amount of signal from this channel will increase in the opposite channel. This is especially useful when using headphones, as the desired channel is heard in both earphones (left and right).

Note: Hold **[Command]** (Mac) or **[Ctrl]** (Win) and click the **Balance Slider** to return Balance to the center position.

Using 'Voice Only' VR

When studying or transcribing a vocal performance, it can be helpful to use the **Keep Vocal Only** option in the Advanced Voice Reduction menu. See ["Reduce or Remove a Lead Vocal."](#)

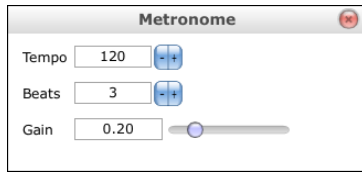
Practicing with the Metronome

To start the metronome, simply click the **Metronome button** at the bottom of the Elevation screen. Click the **Metronome button** again to stop.



There are several ways to open the Metronome menu:

- 1) Press **[.]** on your computer keyboard.
- 2) Right click the **Metronome button** (on Mac, use **[Control]** + click) and select **Settings...**
- 3) Select **File > Metronome.**



Tempo is adjustable from 60 - 240 BPM.

Accent Beat (**Beats**) is adjustable from 2 - 8. By designating an accent beat to play louder than others, the Elevation metronome is able to establish different rhythmic meters. For example, selecting a **Beats** setting of 3 at a moderate tempo will establish a waltz feel.


Gain is adjustable from 0 - 1.0 (full output). Default = .20.

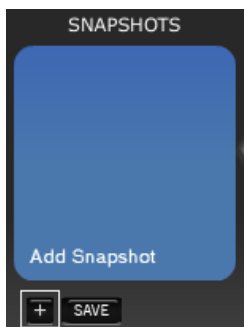
Note: If the metronome is running during recording, Elevation will record the sound of the metronome.

Saving DSP (Digital Signal Processing) and Loop settings as a Snapshot.

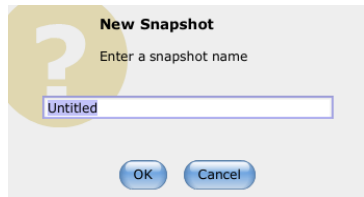
When studying a song in the library, it is possible to save the DSP (Key, Tempo, Fine Tune, VR, Balance, and EQ) and Loop settings as a *snapshot* for easy access in the future. Think of a snapshot as an image showing the position of all the buttons, sliders, dials, and loop markers on the Elevation interface at a particular time. Creating snapshots is the first step in making custom audio files from your library. See ["Exporting a Snapshot as a New File \(mp3, aiff, wav\)."](#) You can also add a snapshot to a playlist for burning to CD. See ["Adding Songs/Snapshots to a Playlist."](#)

After creating a loop or adjusting a track's DSP settings, follow these steps to save a snapshot:

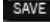
- 1) Click the **Add Snapshot button "+"** just below the snapshot window. If the snapshot window is closed, click the **Snapshot button**  to reopen.



- 2) The following screen will appear:




- 3) Type the name of the new snapshot and click **OK**. The title of the new snapshot now appears in the snapshot window. When selected, snapshots can be played, added to playlists, or exported as new files.

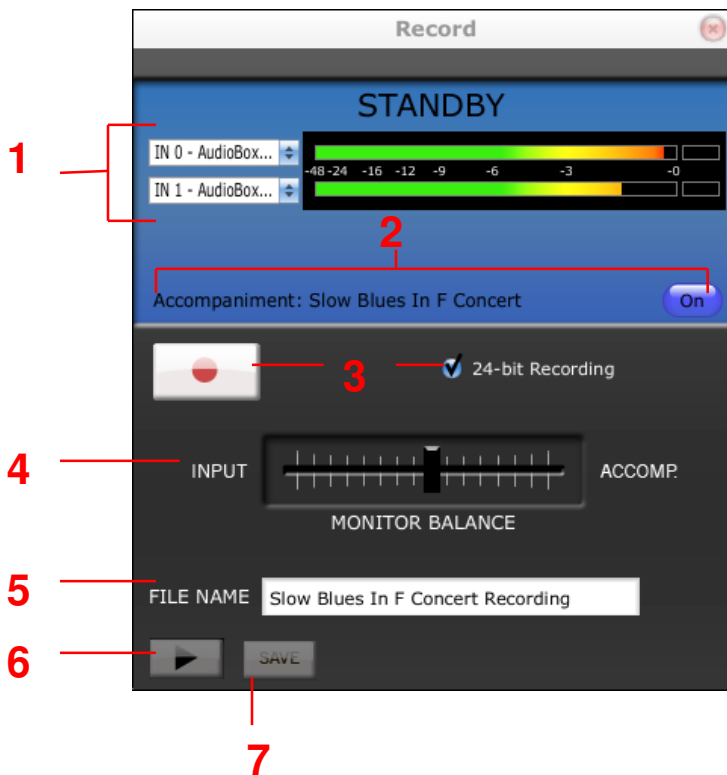
Note: Whenever an existing snapshot has been modified, the snapshot title will appear in bold. Click the **Save button**  to save changes.

Recording with Elevation




Recording with a Song or Snapshot as Accompaniment

When you enter Record mode, the currently selected file or snapshot will appear as the accompaniment track. Confirm that the file or snapshot you wish to record over is currently selected before proceeding.



Press the **Record button**  on the main Library screen to enter Record mode. The Record screen will appear. The Record screen is designed so that you can set up, record, review, and save your performance by working from the top of the screen to the bottom. Recordings made with Elevation automatically appear in the Elevation library when they are saved.





- 1) Select inputs
- 2) Activate accompaniment
- 3) Select resolution and record
- 4) Adjust monitor balance if necessary
- 5) Name the recording
- 6) Review the recording and mix (4)
- 7) Save the recording

- 1) From the Record screen, begin by selecting the input(s) you wish to record. Click the **Input button**  to select from the available inputs. If only one input is selected, Elevation will route the selected input signal to the right and left channels of the recording. Once an input is selected, the VU meter will be active. See the [“Setting Levels”](#) box below.
- 2) The currently selected file, snapshot, or CD track appears as the accompaniment track. To change the accompaniment, exit the Record screen and select a new file, snapshot, or CD track. If no accompaniment is needed, click the **Accompaniment button** . This button will toggle to indicate **“Accompaniment: [file name] ”**. See [Recording without Accompaniment](#).



- 3) By default, Elevation records WAV files at CD quality (16-bit / 44.1kHz). For high-resolution recording, select **24-bit Recording**.³

Click the **Record button**  to begin recording. The visual representation of this button changes from a Record icon to a Stop icon during recording. When you have finished recording, click this button again. When the accompaniment has finished playing, the recording will continue until you click the **Stop button** .

- 4) During recording, the **Monitor Balance slider**  allows you to create a comfortable listening balance between Input level and Accompaniment level. During recording, this slider does not affect the level of the recorded file.⁴
- 5) The **File Name** field will show the name of the file you are recording. At any time before clicking the **Save button** (before or after recording) type the name of the new file in this box.
- 6) To review your performance, press the **Play/ Record Review button** . After recording, the **Monitor Balance slider** will switch to a **Mix control**.



Position the **Mix slider** to adjust the mix between Input level and Accompaniment level before saving the recorded file.

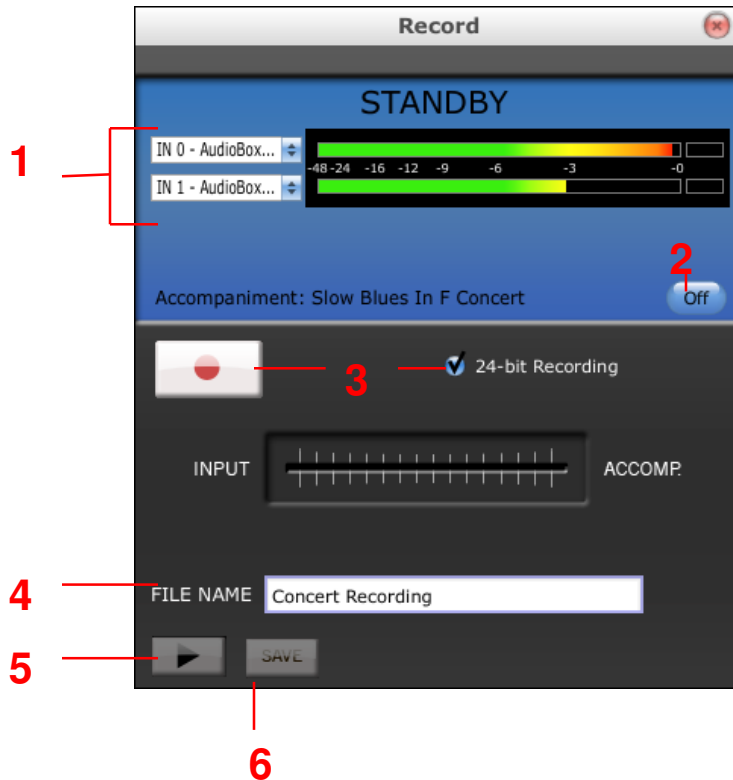
- 7) When you are satisfied with the performance and the Input/Accompaniment mix, press the **Save button** to add the new file to the library. **If you opt to click the Record button  or exit Record mode without saving, your recording will be discarded.**
- 8) Click **Close**  to exit Record mode.

³ CD audio is a 16-bit format. When burning 24-bit files to CD, Elevation employs Mbit+ state-of-the-art dithering provided by iZotope Inc. This ensures that high-resolution recordings are transferred to CD in the most musical and sonically pleasing manner possible.




⁴ If you are using the *zero-latency direct monitoring* feature of your audio interface, place the **Monitor Balance slider** 100% to the right (accompaniment). The **inputs/playback mix control** on your audio interface can then be used to set your monitor balance.


Recording without Accompaniment

There may be times when you simply want to document a musical idea or record a rehearsal or concert. Follow these steps for recording without accompaniment:






- 1) Select inputs
- 2) Deactivate accompaniment
- 3) Select resolution and record
- 4) Name the recording
- 5) Review the recording
- 6) Save the recording

- 1) From the Record screen, begin by selecting the input(s) you wish to record. Click the **Input button**  to select from the available inputs. If only one input is selected, Elevation will route the selected input signal to the right and left channels of the recording. Once an input is selected, the VU meter will be active. See the [“Setting Levels”](#) box below.
- 2) The currently selected file, snapshot, or CD track appears as the accompaniment track. Click the **Accompaniment**  button to deactivate the accompaniment. This button will toggle to indicate **“Accompaniment: [file name] .**
- 3) By default, Elevation records WAV files at CD quality (16-bit / 44.1kHz). For high-resolution recording, select **24-bit Recording**.⁵

Click the **Record button**  to begin recording. The visual representation of this button changes from a Record icon to a Stop icon during recording. When you have finished recording, click this button again.

⁵ CD audio is a 16-bit format. When burning 24-bit files to CD, Elevation employs Mbit+ state-of-the-art dithering provided by iZotope Inc. This ensures that high-resolution recordings are transferred to CD in the most musical and sonically pleasing manner possible.

- 4) The **File Name** field will show the name of the file you are recording. At any time before clicking the **Save button** (before or after recording) type the name of the new file in this box.
- 5) To review your performance, press the **Play/ Record Review button** .
- 6) When you are satisfied with the performance, press the **Save button** to add the new file to the library. **If you opt to click the Record button  or exit Record mode without saving, your recording will be discarded.**
- 7) Click **Close**  to exit Record mode.

Setting Levels

While Elevation is in Record or Standby mode, the input meter will show the level of your input signal (not the accompaniment).



*If your input levels are too low, your recordings may suffer from poor dynamic range. If your input levels are too high, you will run the risk of creating unpleasant digital distortion. Adjust the input gain control on your audio interface so that the meter approaches 0dB without going red or 'Over' when your performance is at its loudest.

*Always be mindful of any meters or peak indicators on your audio interface as well. Even though the Elevation meters may not turn red, it is possible to create distorted recordings by overdriving the audio interface.

*When a signal greater than 0dB is detected, the red 'Over' indication will remain lit. Simply click the red indicator to return the meter to its normal state.

Playlists

There are two main reasons for creating a playlist:

- 1) To organize a set of audio material for study, rehearsal, classroom instruction, performance, etc.
- 2) To organize a set of audio files or snapshots for burning to a CDR/RW.

Creating a Playlist

Follow these instructions for creating new playlists:

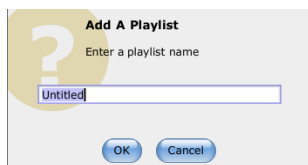
- 1) From the main Library view, press the **Playlist button**.



- 2) Click the **New Playlist button "+"** in the main Playlist window.



- 3) Type the name of your new playlist and click **OK**.



Adding Songs/ Snapshots to a Playlist


Right click on any song or snapshot in the library (on Mac, use **[Control]** + click).

- 1) Select **Add to Playlist**.



- 2) Browse the list of available playlists and select the playlist you wish to add the song or snapshot to.

Setting the Number of Repetitions for Each Snapshot in a Playlist.

When a snapshot is present in a playlist, the Repetitions field will show a value of '1' indicating the snapshot loop will play one time. Click the **Repetitions button**  to select the number of times a loop will play when the snapshot is played or burned to a CD.

Reorder Items in a Playlist

Any snapshot or file in a playlist can be moved to a different position within the playlist by using the **Move** command. Simply highlight the playlist item you wish to move and select **Move > Move Up** ([Ctrl] + [U]) or **Move > Move Down** ([Ctrl] + [D]) until the playlist item reaches its new position.

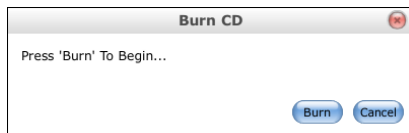
Burning a CD

Once you have created a playlist, you have the option of burning the playlist to CD.

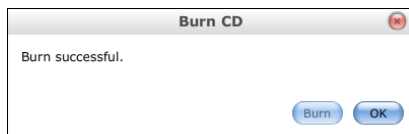
- 1) From Playlist mode, insert a blank CD-R or CD-RW into your computer's CD recording drive.
- 2) Click the **Burn CD button**.



- 3) Click **Burn** to begin or click **Cancel** to exit.



- 4) When the CD is finished burning, click **OK**.



Note: The CD burn procedure adds a stage of audio processing to allow for Elevation's pitch shifting and time stretching (**Key** and **Tempo control**). This will lead to increased CD burn times.

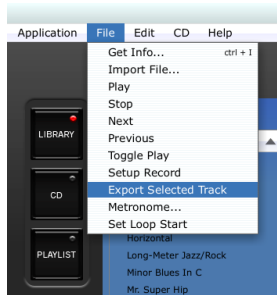
Exporting a Snapshot as a New File (mp3, aiff, wav)

Once you have saved DSP and Loop settings as a snapshot, Elevation allows you to export the snapshot as a new file.

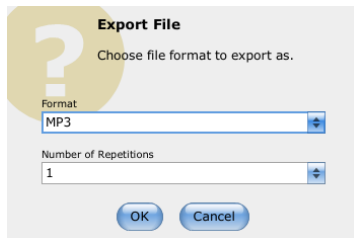
- 1) Click the **Library button** to enter Library mode.



- 2) Select the snapshot you wish to export.
- 3) Select **File > Export Selected Track**.





- 4) Select the **Export File Format** and **Number of Repetitions** and click **OK**.



- 5) Choose a **File Name** and **Location** and click **SAVE**. When typing the file name, remember to also type the file extension, i.e. take1.mp3.

Shortcut Keys and Mouse Support

Space Bar	Toggle playback ON and OFF.
Up arrow	Select previous file, snapshot, or CD track
Down arrow	Select next file, snapshot, or CD track
Forward arrow	FWD button 
Backward arrow	BWD button 
[.]	Metronome Info
[\]	Loop start, loop end, clear loop
[Ctrl] + [I] / [Command] + [I]	Get Info for selected track
[Ctrl] + [Q] / [Command] + [Q]	Quit
[Ctrl] + [U] / [Command] + [U]	Move playlist item up
[Ctrl] + [D] / [Command] + [D]	Move playlist item down
[Shift] + click	Select contiguous tracks in CD mode
[Ctrl] + click / [Command] + click	<ul style="list-style-type: none"> Reset for Key, Tempo, Fine Tune, Balance, and VR Panning control Select non-contiguous tracks in CD mode
Mouse wheel	<ul style="list-style-type: none"> The following controls can be adjusted by positioning the mouse pointer over the control and rotating the mouse: Volume, Key, Tempo, Fine Tune, Balance, Monitor Balance, Record Mix, EQ sliders, VR Panning, and Metronome Gain. Positioning the mouse pointer in the Waveform window and rotating the mouse wheel will alter zoom.



Contact Information

Superscope Technologies
1508 Batavia Avenue
Geneva, Illinois 60134 USA

elevation@superscopetechnologies.com
phone 630.232.8900

For Elevation software updates or for answers to commonly asked questions, please visit the Elevation page at our web site www.superscopetechnologies.com

iZotope® powered by iZotope®.
SonicFit® iZotope, Inc.
Copyright © 2005-2008
All Rights Reserved.

MPEG Layer-3 audio coding technology
licensed from Fraunhofer IIS and Thompson.
“Supply of this product does not convey a license nor imply any right to distribute MPEG Layer-3 compliant content created with this product in revenue-generating broadcast systems (terrestrial, satellite, cable and/or other distribution channels), streaming applications (via Internet, intranets and/or other networks). Other content distribution systems (pay-audio or audio-on-demand applications an the like) or on physical media (compact disc, digital versatile discs, semiconductor chips, hard drives, memory cards and the like). An independent license fro such use is required. For details, please visit <http://mp3licensing.com>.”

Copyright, © 2008
Superscope Technologies, Inc.
All Rights Reserved.

Patent Pending

Made in U.S.A.

February 2010